

48" SIDE BY SIDE REFRIGERATOR WITH SOLID STAINLESS STEEL DOORS

TR-48SBS-SS-C

FEATURES

- Balanced, forced-air refrigeration system enables proper airflow and even temperature throughout to keep food fresh.
- Industry exclusive, 300-series stainless steel interior and exterior.
- All stainless steel, beautifully crafted proud hinges pass True's rigorous one million door opening test.
- Beautifully crafted glass door with stainless steel frame, 120° stay-open feature and ergonomically designed, robust, tubular handles.
- Built-in Ice Maker produces up to 3lbs./day of prism shaped ice with 5 lbs. storage capacity.
- Ramp-up, showcase interior LED lighting provides amazing illumination throughout.
- Intuitive True Precision® Control and readout provides digital accuracy and easy operation.
- Dual evaporator and dual compressor enables dedicated cooling systems for each zone.

ORGANIZATION

Refrigerator

- 3 adjustable/removable stainless steel encapsulated glass shelves.
- 1 fixed stainless steel encapsulated glass shelf.
- 3 full-extension, soft-close drawer bins with polycarbonate fronts and integrated handles.
- 3 adjustable/removable stainless steel door bins.

Freezer


- 3 adjustable/removable electropolished stainless steel wire shelves.
- 1 fixed electropolished stainless steel wire shelf.
- 3 full-extension, soft-close wire bins.
- Built-in Ice Maker.

BUILD YOUR TRUE

Customize your True with a variety of finish and hardware options at true-residential.com/custom.

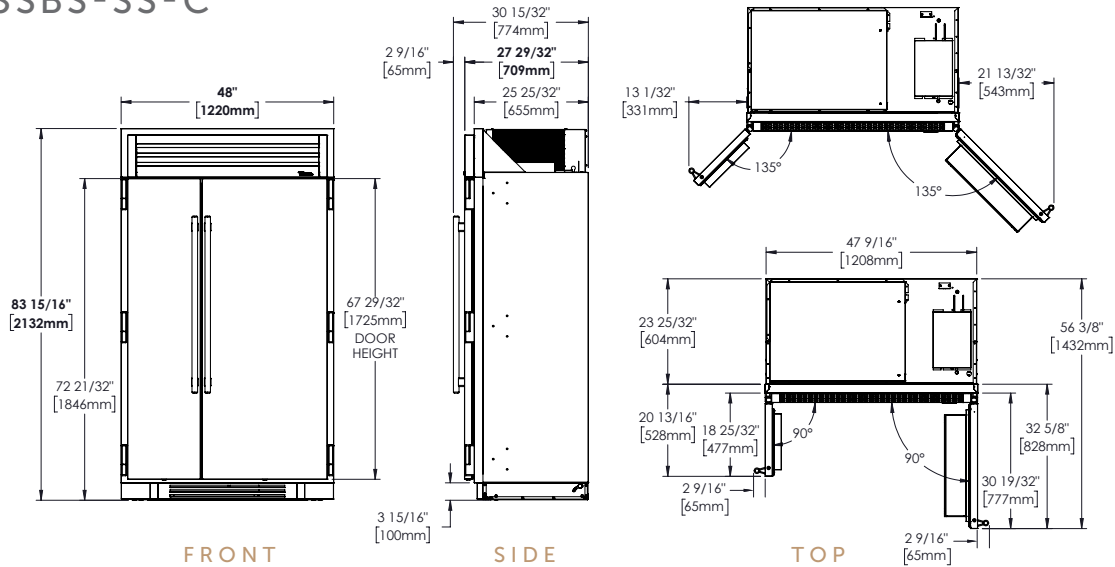


SPECIFICATIONS

Dimensions (w x h x d)	48" x 84" x 24"
Cutout Dimensions (w x h x d)	
Flush Opening	48¼" x 84¼" x 26"
Standard Opening	47¾" x 84" x 24"
Capacity (cu. ft.) – Refrigerator	20.7
Capacity (cu. ft.) – Freezer	8.8
Temperature Range – Refrigerator	33°F – 42°F
Temperature Range – Freezer	-4°F – 4°F
Water Supply	¼" O.D. braided stainless steel or PEX tubing (¼" O.D. lines and fittings not included). Note: Copper line is not recommended.
Flow Rate (gpm/lpm)	0.5 / 1.89
Operating Pressure psi (kPa)	30 (207) – 100 (689)
Incoming Water Temperature	33 – 100°F (0.6 – 38°C)
Weight (lbs.)	820
Voltage	115/60/1  115/60/1 NEMA-5-15R
Amps	5.2
Annual Energy Consumption (kwh)	604
Refrigerant Type	r600a
Power Cord Length (ft.)	9
Energy Star Rated	Yes

48" SIDE BY SIDE REFRIGERATOR WITH SOLID STAINLESS STEEL DOORS

TR-48SBS-SS-C



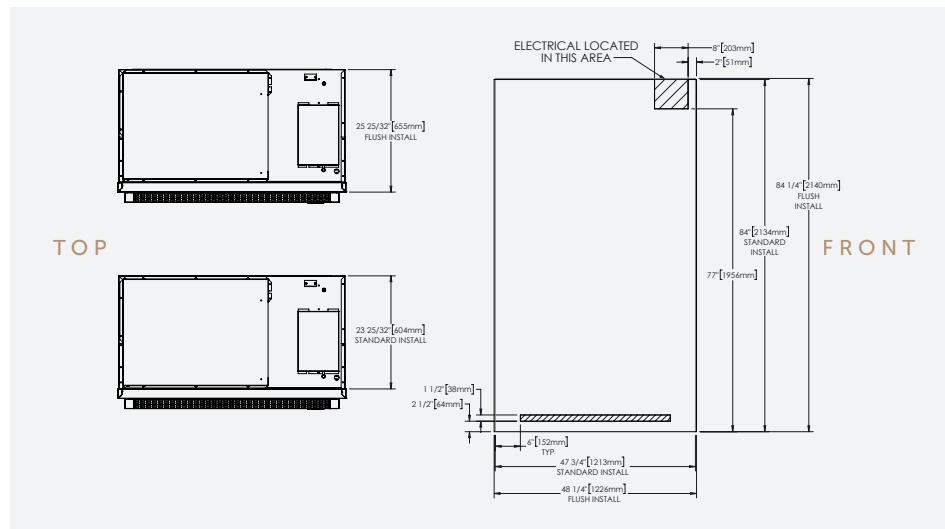
OPENING DIMENSIONS

FLUSH OPENING

WIDTH	HEIGHT	DEPTH
48 1/4"	84 1/4"	26"

STANDARD OPENING

WIDTH	HEIGHT	DEPTH
47 3/4"	84"	24"



MODEL OPTIONS

MODEL	FINISH
TR-48SBS-SS-C	Stainless solid door
TR-48SBS-SG-C	Stainless glass door

ACCESSORIES (OPTIONAL)

- Side panel(s)
- Joining kits

WARRANTY

- 3 year full (parts & labor)
- 6 year sealed system (parts & labor)
- 7-12 year (parts only – sealed system on registered products)